



Oslofjord

CONVENTION CENTER

Branding package

Revision 24.01





## Creative Planning

The early stages of your consultation stem from creative and practical conversations with your personal media sales and operations managers.

From this, our role is to bring the experience to life.

**CCS**

Convention Center South

**CCN**

Convention Center North

**OA**

Oslofjord Arena

**DIV**

Various locations





**CCS 201:** Glass railing above the main entrance to CCS

Dimensions W x H	1945×145cm
File type	PDF. Printed CMYK
Quantity	1 site available
Material	Mesh or fabric. Eyelets every 50-60cm on the outer edge. Not frontlit PVC, it can cause the glass to shatter in the sun
Application method	Rope tightened between eyelets on the back side of the glass railing.

**CCS 202:** Perforated vinyl stickers on 4 glass sections by main entrance to CCS

Dimensions W x H	4pcs Top panel: 122×160cm 4pcs Bottom panel: 122×257cm
File type	PDF. Printed CMYK
Quantity	1 site available
Material	Perforated vinyl. Not frontlit PVC, it can cause the glass to shatter in the sun

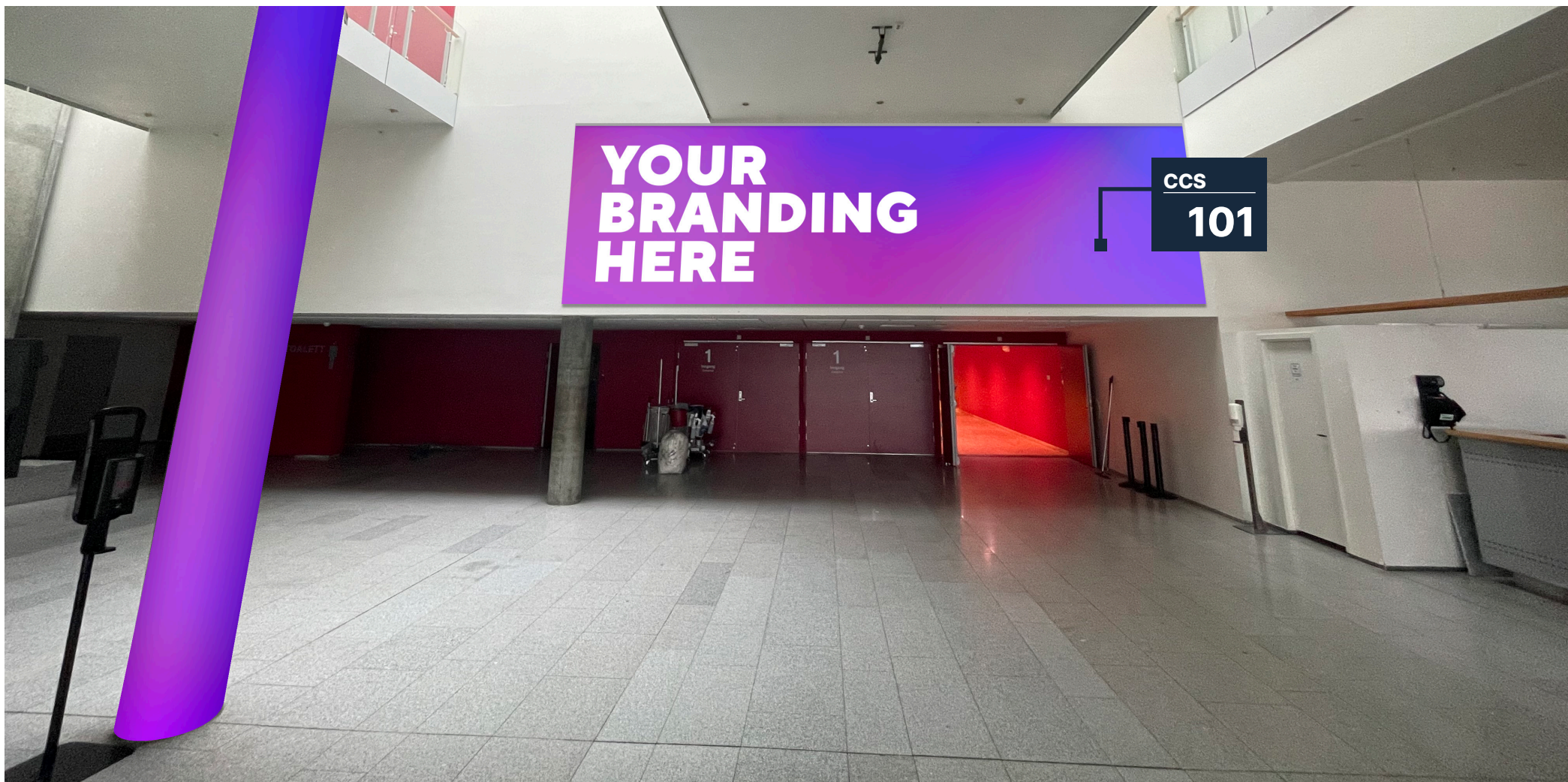




**CCS 203:** Glass in roundabout at revolving entrance as CCS

Dimensions W x H	Revolving door: 140×198cm Glass door: 113×240cm
File type	PDF. Printed CMYK
Quantity	3 sides available
Material	Perforated vinyl





**CCS 101:** Banner above entrance to S1 Plenary Hall

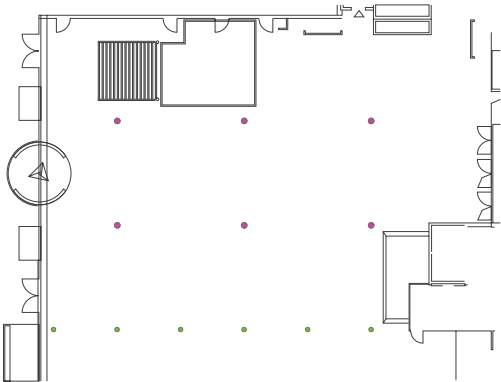
Dimensions W x H	760×200cm
File type	PDF. Printed CMYK
Quantity	1 site available
Material	Fabric



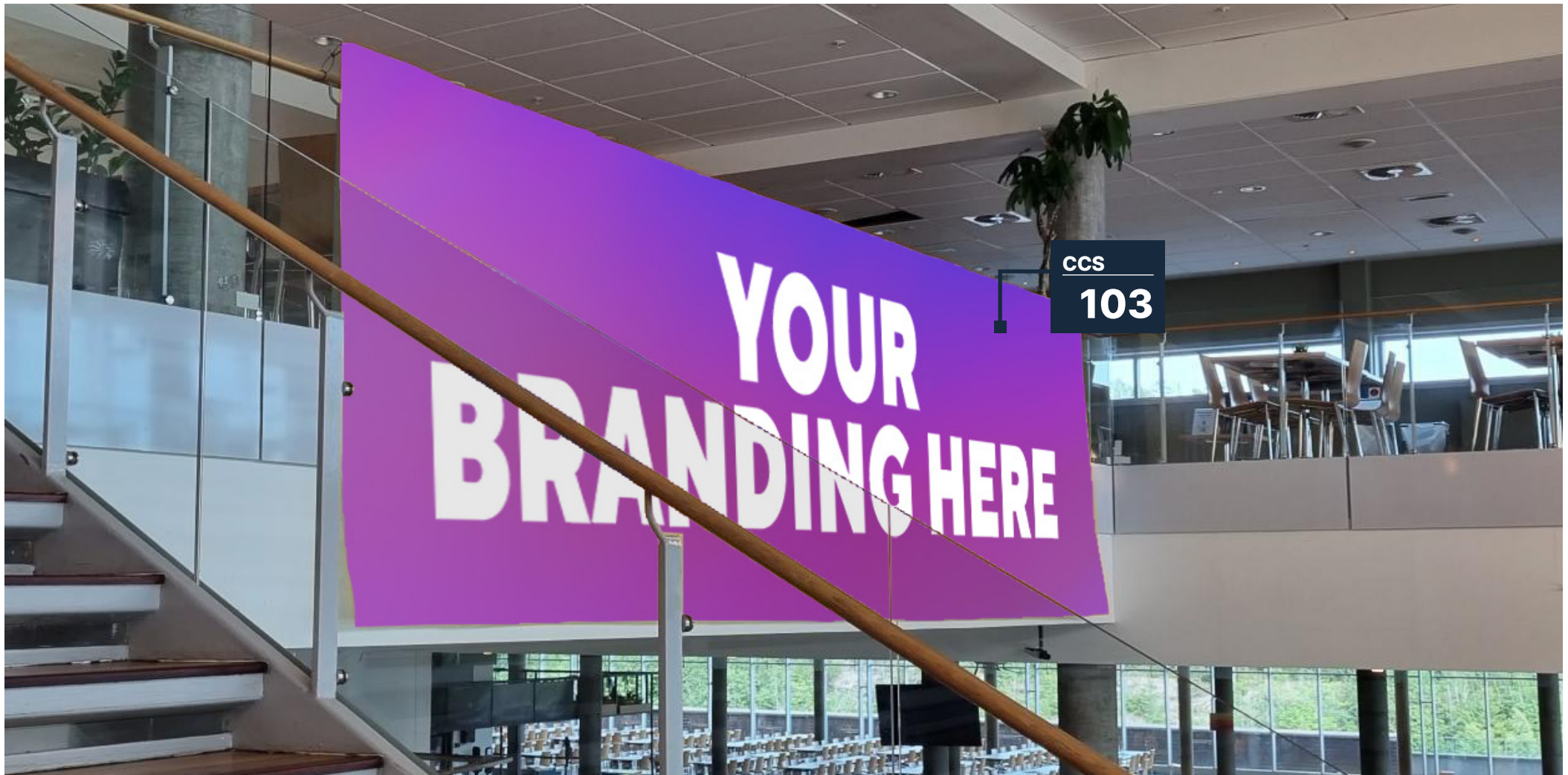


**CCS 102:** Banners on the pillars in S2 Lobby level 1

Dimensions W x H	Pillar Ø300mm = Bannersize: 100cm x 390cm (green) Pillar Ø400mm = Bannersize: 131cm x 390cm (pink)
File type	PDF. Printed CMYK
Quantity	Ø300mm: 6 sites available, Ø400mm: 6 sites available
Material	PVC frontlit banner. 5cm overlap and without eyelets
Application	Stage tape







**CCS 103:** Dropping banner from handrails on S6 Lobby level 2

Dimensions W x H	993×250cm
File type	PDF. Printed CMYK
Quantity	1 site available
Material	PVC Frontlit
Application method	String/strips to fasten the banner to the railing on the floor above. Eyelets every 50-60cm on the outer edge.





**CCS 104:** Hanging banners

Dimensions W x H	100×200cm
File type	PDF. Printed CMYK
Quantity	6 site available
Material	Polyester

Your event may qualify for display from 6am to midnight on your event days (bump in/out excluded).





CCS 105: Banner	
Dimensions W x H	300×200cm
File type	PDF. Printed CMYK
Quantity	1 site available
Material	Fabric

Your event may qualify for display from 6am to midnight on your event days (bump in/out excluded).





**CCN 201 (A/B):** Hanging banner between pillars

Dimensions W x H	400×60cm
File type	PDF. Printed CMYK
Quantity	A-side of CCN: 6 sections. B-side of CCN: 9 sections.
Material	Mesh
Application method	String/strips to fasten the banner to the railing on the floor above Eyelets every 50-60cm on the outer edge

**CCN 202:** Glass sliding door at entrance A - CCN

Dimensions W x H	Entrance A sliding doors: 95×203cm Entrance A side sections: 115×314cm	Entrance A Top section: 204×95cm
File type	PDF. Printed CMYK	
Quantity	1 site available	
Material	Perforated vinyl	



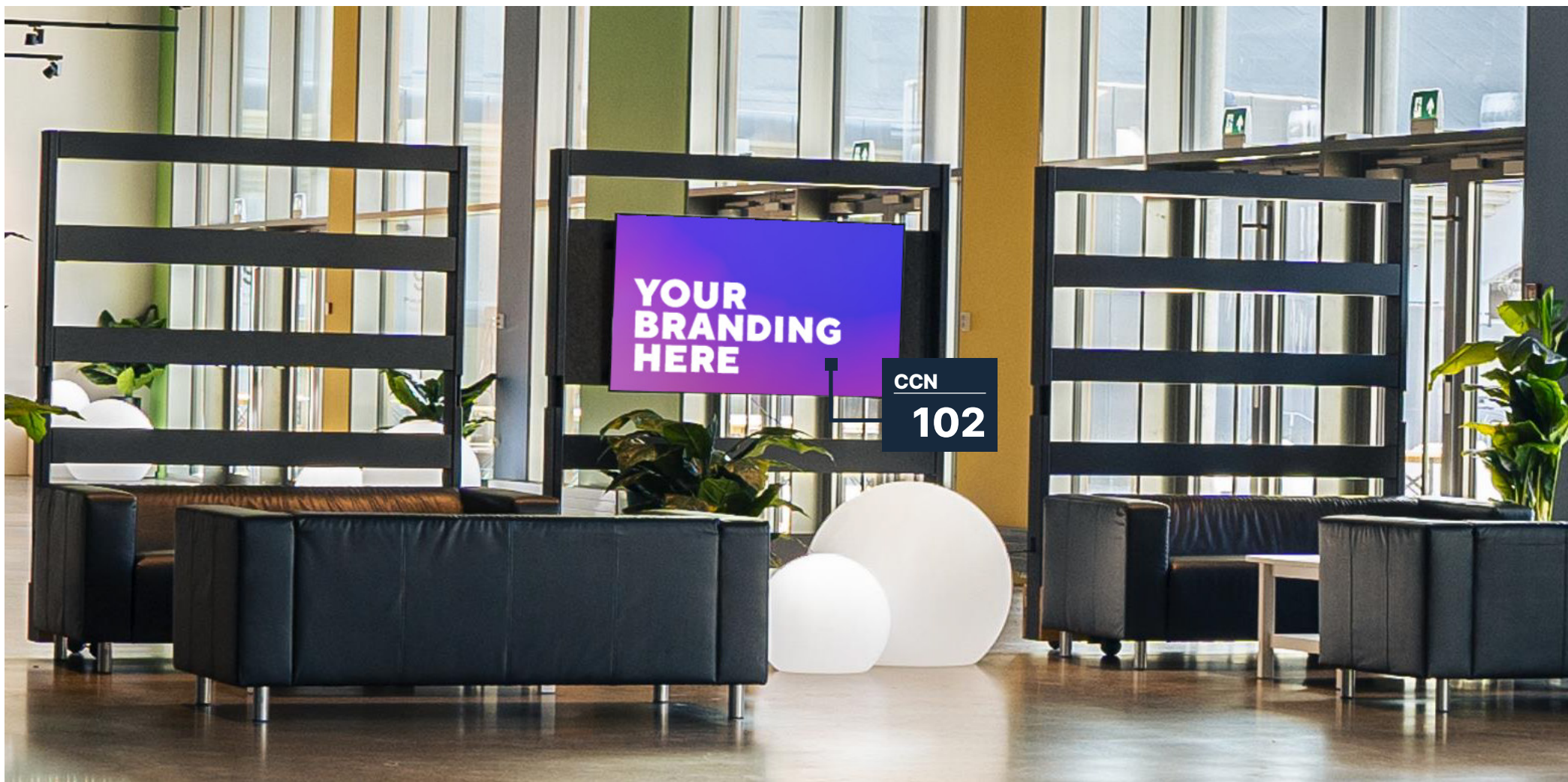


**CCN 101:** Endwall banner at N4 Lobby

Dimensions W x H	500×200cm
File type	PDF. Printed CMYK
Quantity	1 site available
Material	Fabric

Your event may qualify for display from 6am to midnight on your event days (bump in/out excluded).





**CCN 102:** TV-screens at N4 Lobby

Dimensions W x H	Behind the reception: 75" Mounted on a moveable wall: 55"
File type	Digital
Quantity	2 sites available
Connection possibilities	- USB - HDMI





#### OA 201: Glass over the main entrance to OA

Dimensions W x H	845×110cm
File type	PDF. Printed CMYK
Quantity	1 site available
Material	Mesh. Eyelets every 50-60cm on the outer edge. <b>Not frontlit PVC, it can cause the glass to shatter in the sun</b>

Your event may qualify for display from 6am to midnight on your event days (bump in/out excluded).

#### DIV 008: Stickers

Dimensions W x H	Ø100cm
File type	PDF. Printed CMYK
Quantity	Unlimited
Material	Sticker-film

Your event may qualify for display from 6am to midnight on your event days (bump in/out excluded).

#### DIV 007: Ground Stickers

Dimensions W x H	Ø100cm
File type	PDF. Printed CMYK
Quantity	Unlimited
Material	Laminated sticker-film

Your event may qualify for display from 6am to midnight on your event days (bump in/out excluded).





**DIV 001:** Beachflags

Dimensions W x H	Total hight: 360cm
File type	PDF. Printed CMYK
Quantity	Unlilimited
Material	Polyester

Your event may qualify for display from 6am to midnight on your event days (bump in/out excluded).





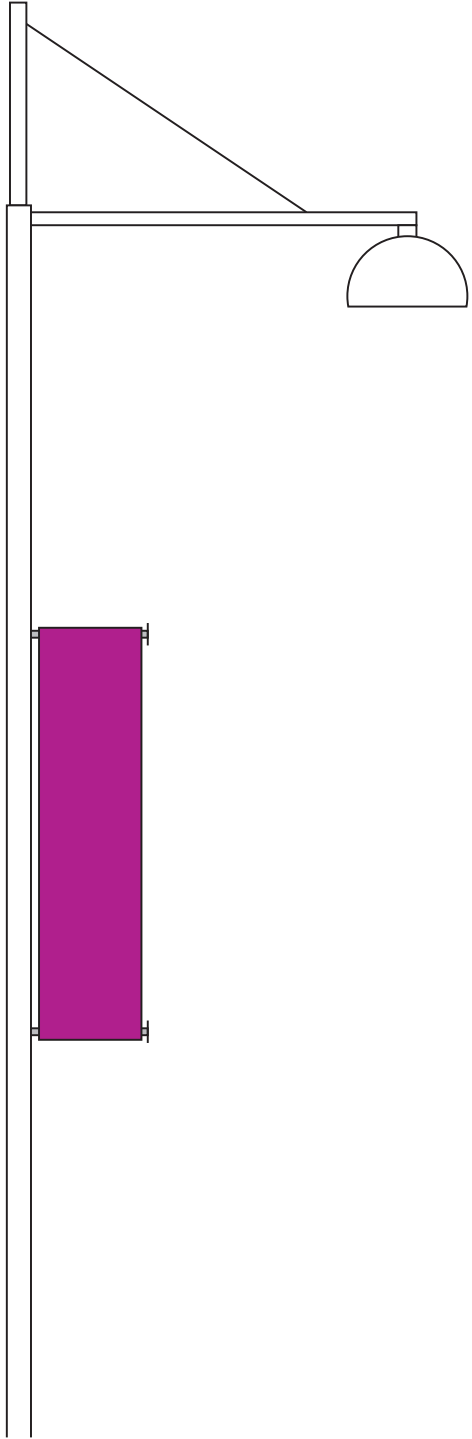
#### DIV 002: Flags

Dimensions W x H	240×150cm
File type	PDF. Printed CMYK
Quantity	9 sites available
Material	Polyester.
Application medthod	Flag clips

#### Options of placement:

- 3 flags at Oslofjord Arena forecourt
- 3 flags at Convention Center South forecourt
- 3 flags at the beach-area





**DIV 003:** Lamp post banners

Dimensions W x H	50×200cm
File type	PDF. Printed CMYK
Quantity	11 sites available
Material	Polyester.

Your event may qualify for display from 6am to midnight on your event days (bump in/out excluded).





**DIV 004:** Rollups

Dimensions W x H	85×200cm
File type	PDF. Printed CMYK
Quantity	Unlimited
Material	PP-foil

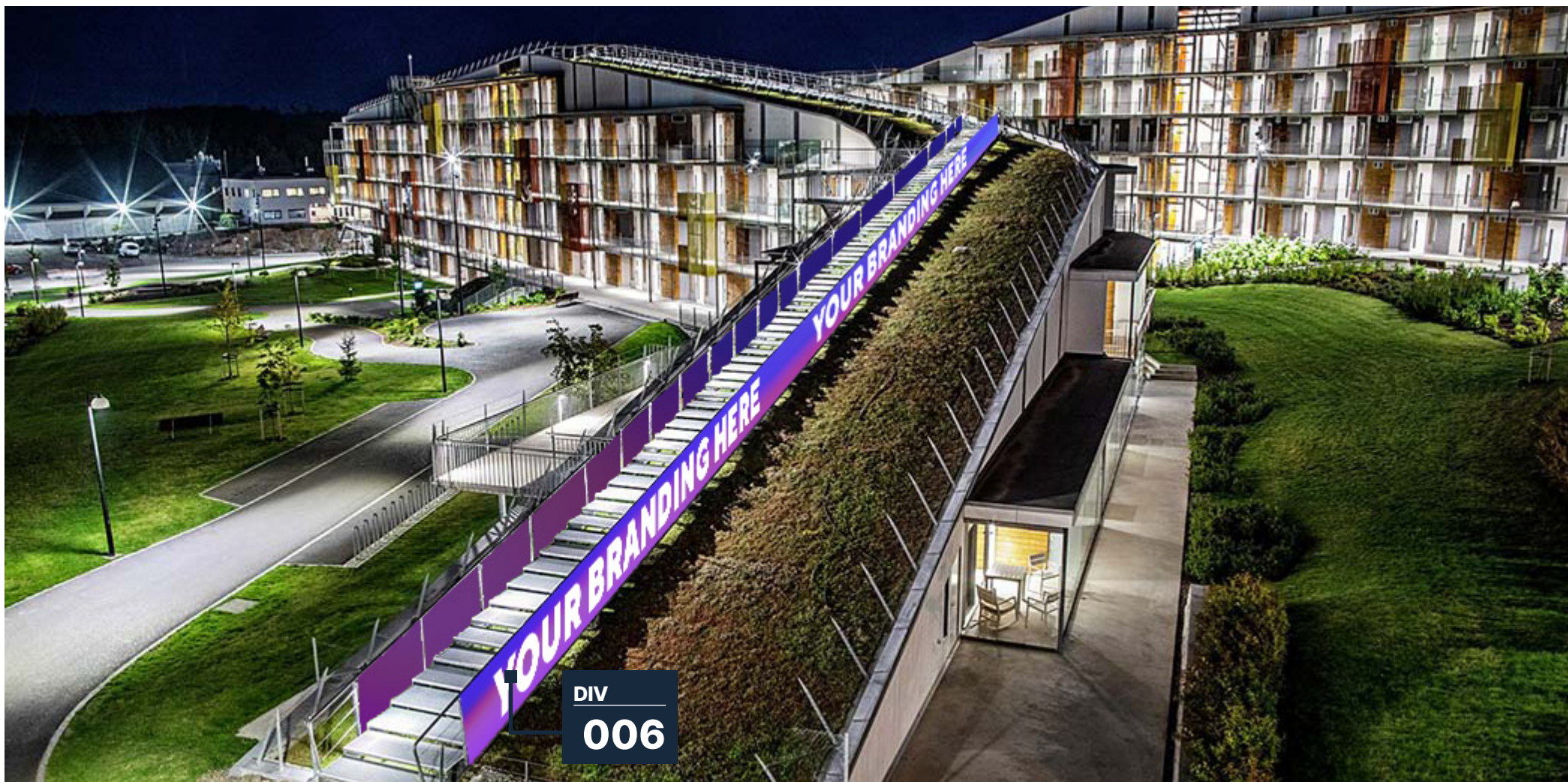




**DIV 005:** Top of pogoda-tents

Dimensions W x H	510×100cm
File type	PDF. Printed CMYK
Quantity	1 to 40 (depending on set-up, tents)
Material	Mesh.
Application method	Eyelets every 50-60cm on the outer edge, to fasten with screws into wooden frame



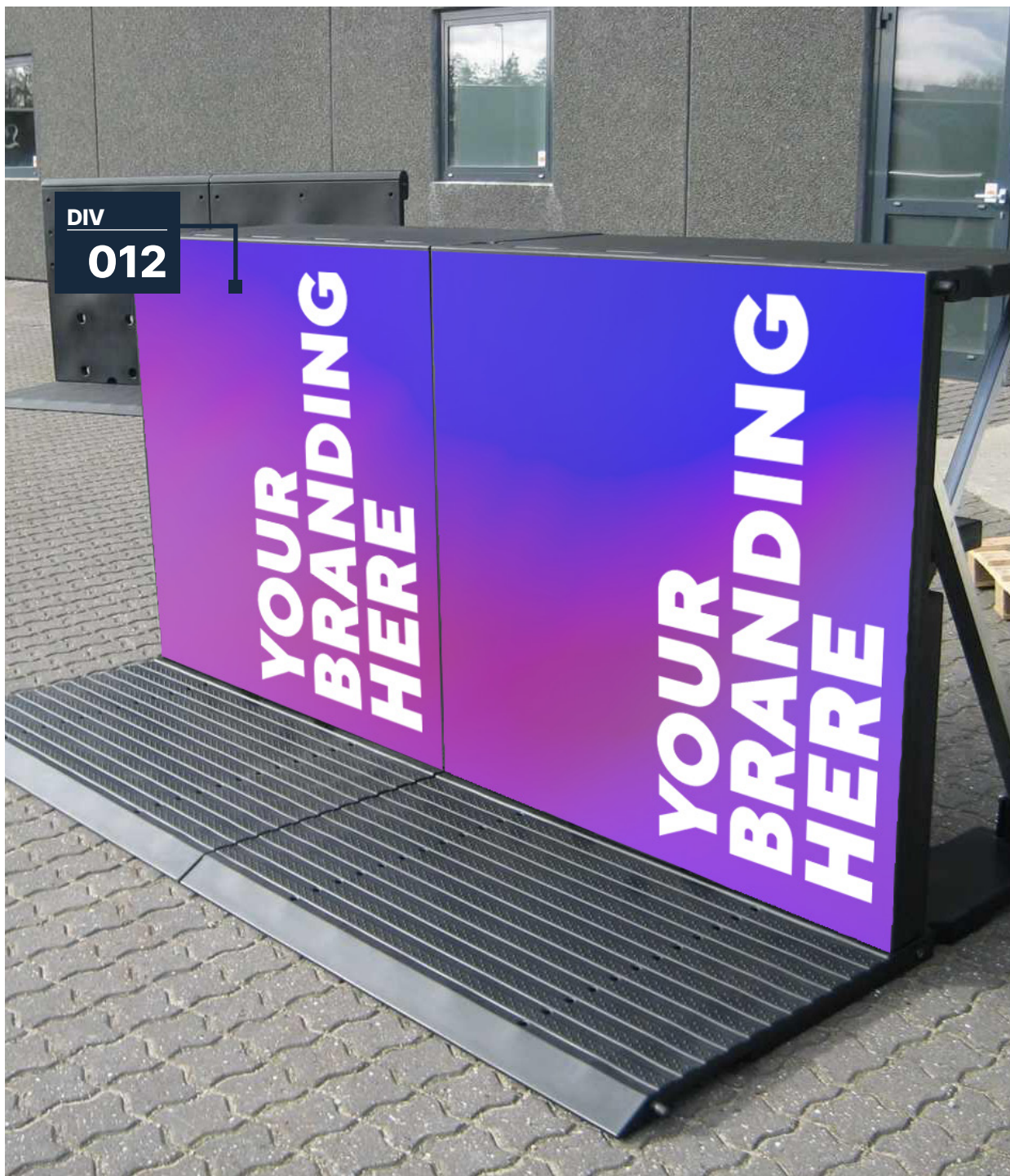


**DIV**  
**006**

#### **DIV 006:** Railing on hotelbuilding

Dimensions W x H	500×80cm
File type	PDF. Printed CMYK
Quantity	4 sites available
Material	Mesh. Eyelets every 50-60cm on the outer edge.





#### **DIV 012:** Bar barrier front

Dimensions W x H	115×115cm
File type	PDF. Printed CMYK
Quantity	1 to 100 (depending on set-up)
Material	Foil wrap, Vinyl stickers





**DIV 013:** RYB colour function in the lamp-post heads

- 1 colour through-out the 'convention village' included in the site rental
- Further customisations possible with extra cost









DIV  
015

**DIV 015:** GOBO-lens

- Requires renting + setup/take down of a moving head stage and purchasing a GOBO-lens
- Programming the light to project the GOBO-lens logo onto the waterfall





**DIV 016:** Tote-bag

Dimensions W x H	42×38cm
File type	PDF. Printed CMYK/Pantone
Quantity	Unlimited
Volume	7 L
Colours	14 colours available
Material	Cotton, 140 g/m2





**DIV 017:** Custom made signage on request





**Let's start planning your next event!**

[sitebranding@oslofjord.com](mailto:sitebranding@oslofjord.com)  
+47 33 00 20 00

Oslofjord Convention Center  
Oslofjordveien 9  
3159 Melsomvik

[www.oslofjord.com/en](http://www.oslofjord.com/en)

